

■ CARACTERISTICAS

1. Impulsor Semi-Abierto, en hierro de alto cromado con placas de desgaste de hierro dúctil incrementando la resistencia al desgaste cuando el fluido tiene partículas abrasivas.
2. Doble sello mecánico interno con caras en carburo de silicio, corriendo en una cámara de llena de aceite y protegido por un sello de labio corriendo contra una manremplazable y eje del impulsor de acero inoxidable #420, proporcionando el más eficiente y durable diseño de sello disponible.
3. Motor altamente eficiente de trabajo continuo, lleno de aire, embobinado de cobre con aislamiento clase E o B, minimizando los costos de operación.
4. Sensor interno térmico y de amperaje, previene fallas del motor debido a sobrecarga o funcionamiento accidental en condiciones secas.
5. Doble sellado, permanente lubricado, baleros de bola C3 de alta temperatura para una vida B-10 de 60,000 horas proporcionando una vida operacional extendida.
6. Descarga en la parte superior y diseño de flujo a través de la bomba permitiendo una operación a bajos niveles de agua por períodos prolongados.

■ APPLICATIONS

1. Comercial, industrial aguas residuales y drenado de sitios de construcción.
2. Traslado de Afluentes.
3. Cascadas decorativas y fuentes.
4. Abastecimiento de aguas crudas, ríos o lagos


OIL LIFTER
■ SPECIFICATIONS

Tamaño de Descarga
Rango de Potencia

Capacidad
Cabeza
Máxima Temperatura del Agua
Materiales de Construcción
Carcasa
Impulsor
Eje
Armazón del Motor
Soportes
Sello Mecánico
Sello Superior

Sello Inferior

Elastómeros
Tipo de Impulsor

Capacidad de manejo de Características del Motor
Tipo, Velocidad, Hz.
Voltaje, Fase
Aislamiento
Rodamientos
Accesorios

Modo de Operación

■ STANDARD

2", 6" Npt (50, 150mm)
2 - 15 Hp. (1.5 - 11Kw)

25-650Gpm (.09-2.46 m³/min)
5 Ft. - 150 Ft. (1.5 - 45.7m)
104F. (40C)

Hierro Vaciado
Hierro de Alto Cromado
Acero Inoxidable #420
Hierro Vaciado
Acero Inoxidable #304

Carburo de Silicio / Carburo de Silicio (2-3 Hp.)
Carburo de Silicio / Carburo de Silicio (5-15 Hp.)
NBR (Hule Nitril Buna)
Semi-Abierto, manejo de sólidos.

Tamaño de Rejilla

Aire Lleno, 3600 R.P.M., 60
208/230/460/575 V., 3 Fase
Clase E, B (10HP - 15HP)
Pre-lubricados, Doble Sello
Cable de Poder Sumergible
50'
Manual

■ OPTIONS

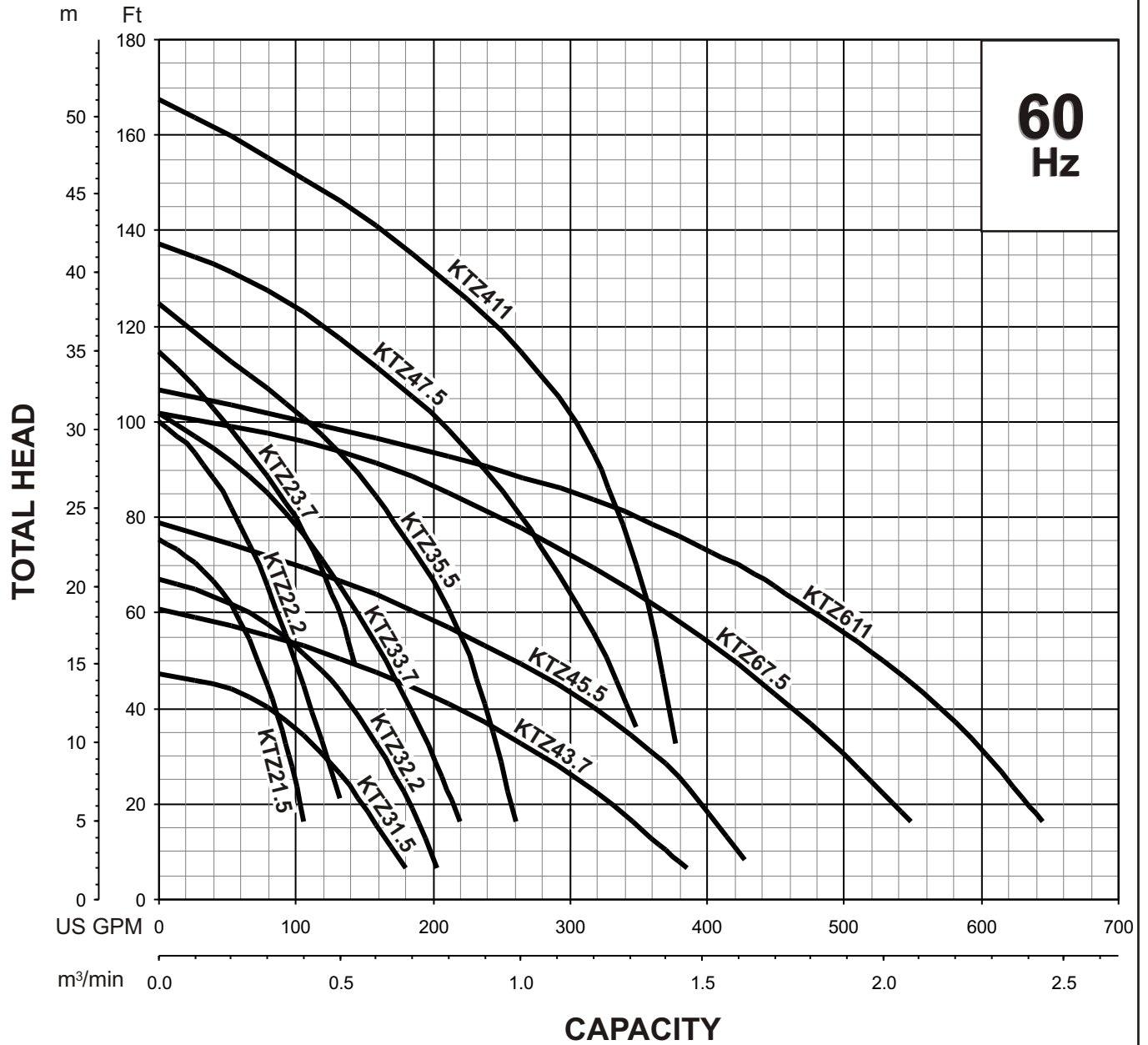
Longitud como sea Requerida
Sedazo de Bajo Nivel.



KTZ - SERIES DEWATERING PUMPS

GROUP PERFORMANCE RANGE

GROUP PERFORMANCE RANGE

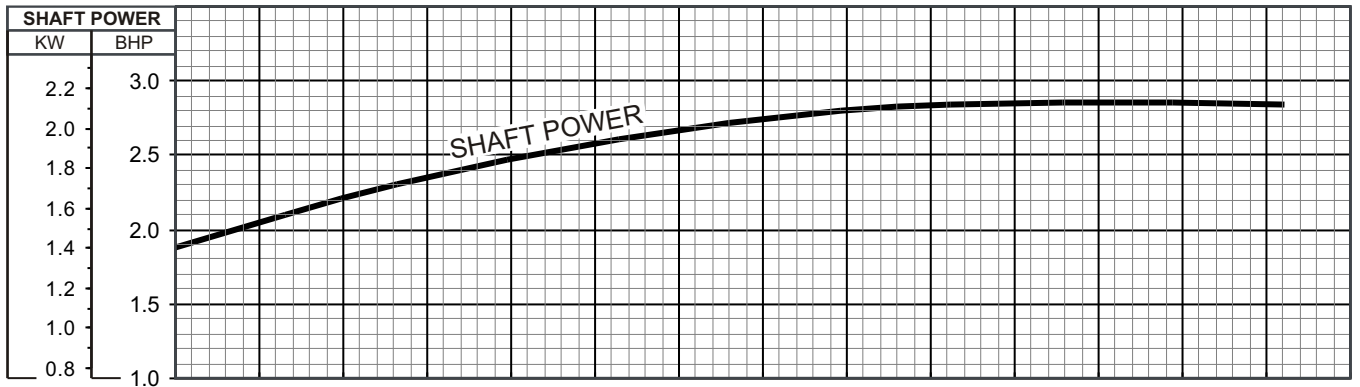
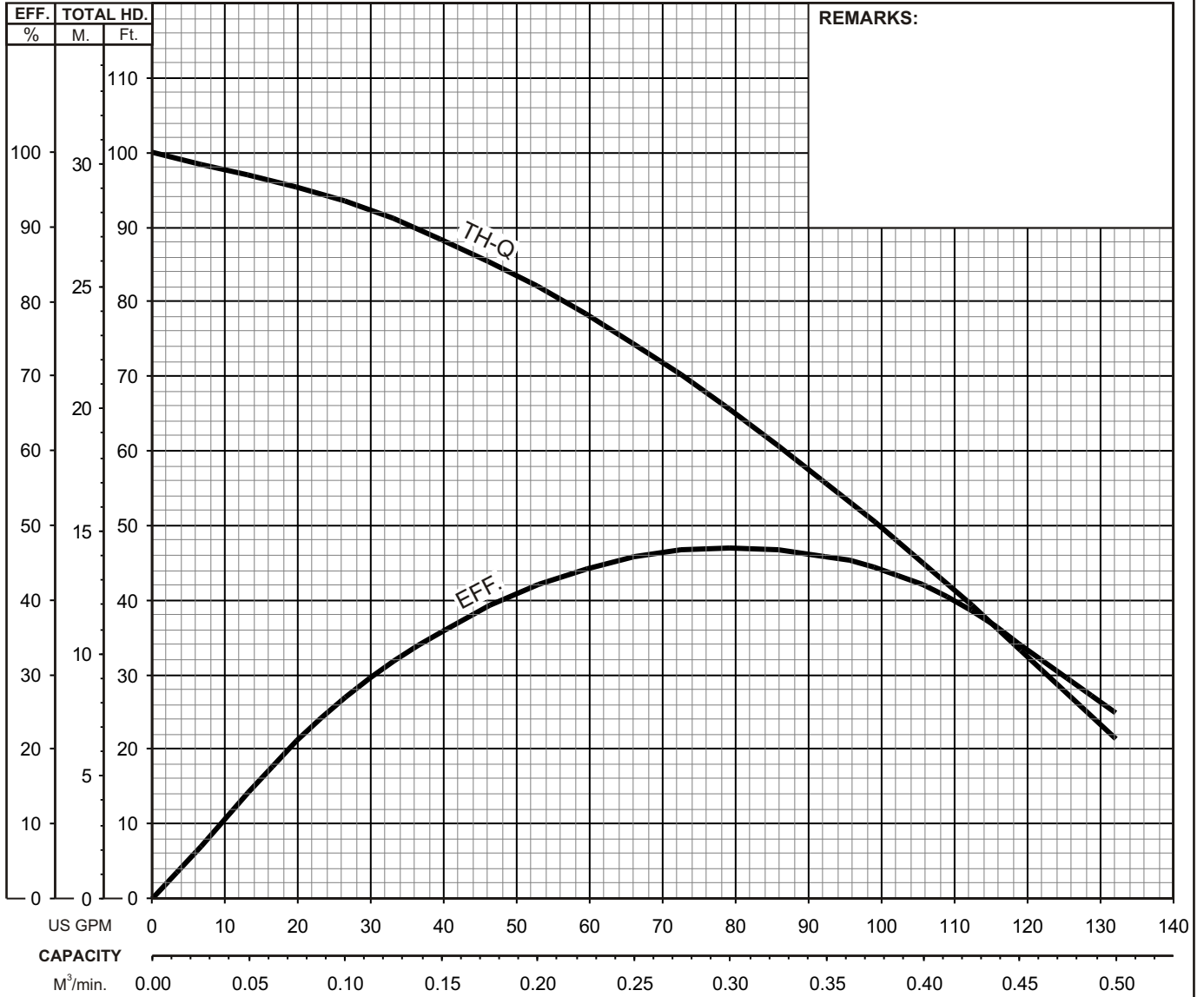




KTZ - SERIES PERFORMANCE CURVE

KTZ22.2-60

MODEL	BORE	HP	KW	RPM	SOLIDS DIA	LIQUID	SG.	VISCOSITY	TEMP.
KTZ22.2-60	2"/50mm	3	2.2	3435	0.334"/8.5mm	Water	1.0	1.81 CST	60°F
PUMP TYPE	PHASE	VOLTAGE	AMPERAGE		HZ	STARTING METHOD	INS. CLASS		
Dewatering Pump	3	208/230/460/575	9.4 / 9.2 / 4.6 / 3.5		60	Direct On Line	E		
CURVE No.	DATE	PHASE	VOLTAGE	AMPERAGE	HZ	STARTING METHOD	INS. CLASS		
-	-	-	-	-	-	-	-		

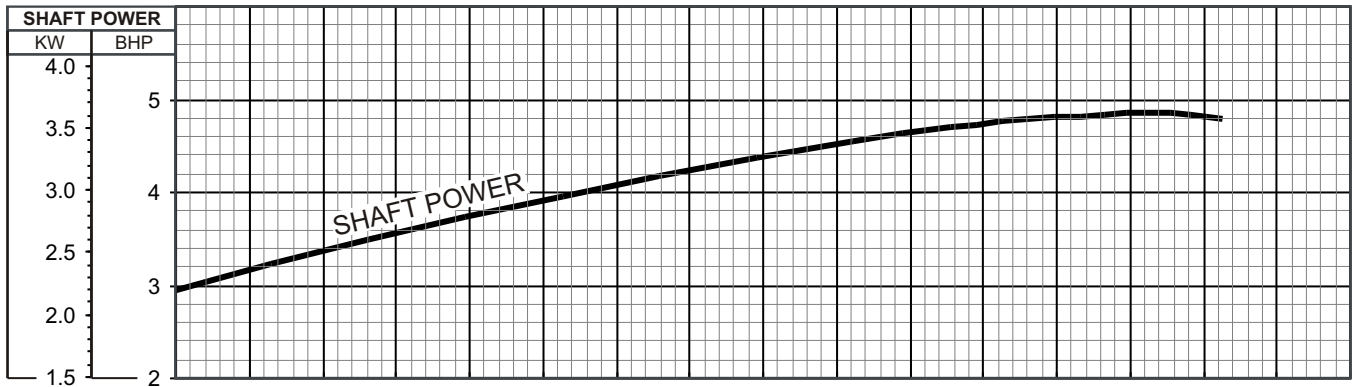
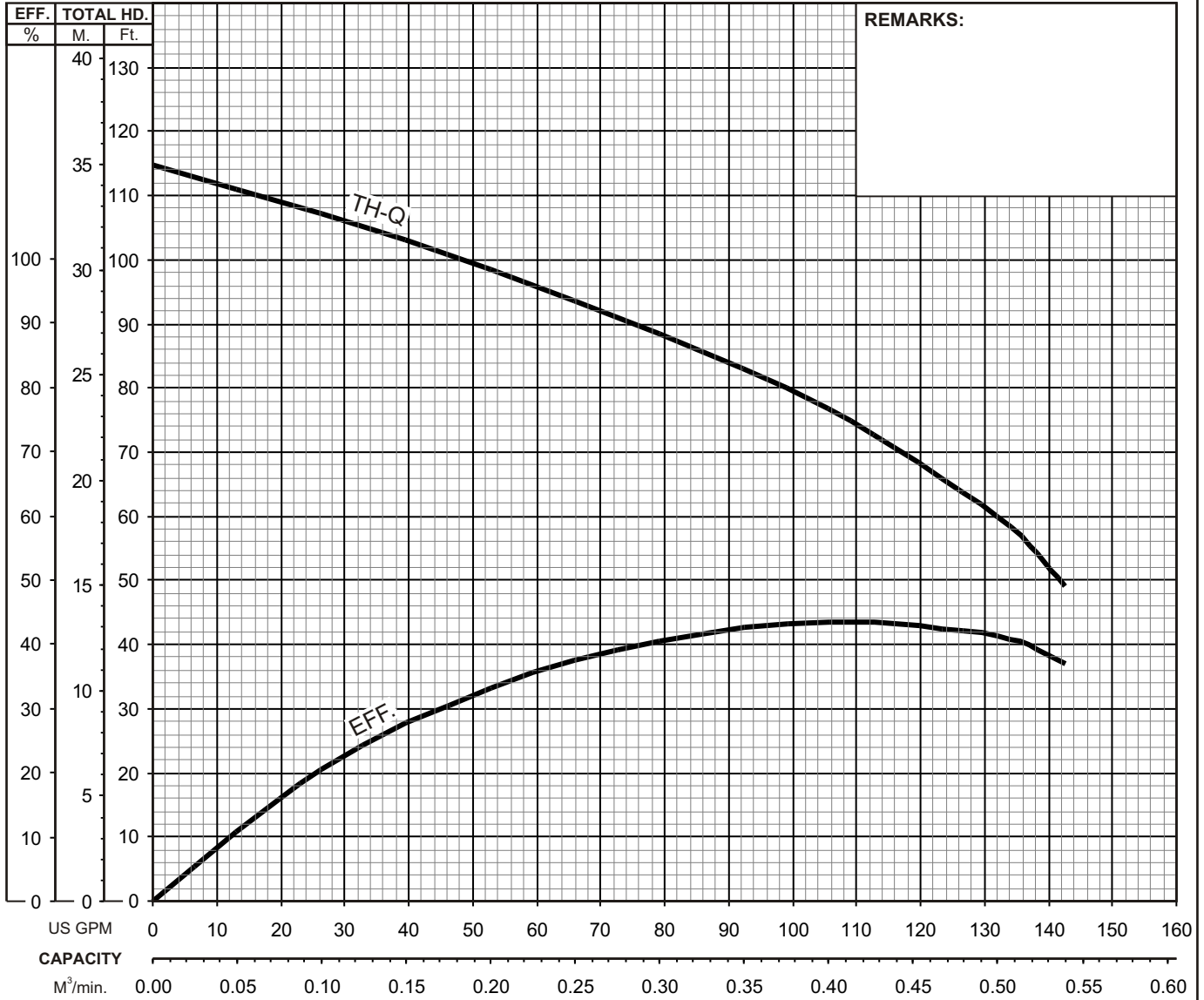




KTZ - SERIES PERFORMANCE CURVE

KTZ23.7-60

MODEL	BORE	HP	KW	RPM	SOLIDS DIA	LIQUID	SG.	VISCOSITY	TEMP.
KTZ23.7-60	2"/50mm	5	3.7	3410	0.334"/8.5mm	Water	1.0	1.81 CST	60°F
PUMP TYPE	PHASE	VOLTAGE	AMPERAGE		HZ	STARTING METHOD	INS. CLASS		
Dewatering Pump	3	208/230/460/575	14.5 / 13.0 / 6.5 / 5.3		60	Direct On Line	E		
CURVE No.	DATE	PHASE	VOLTAGE	AMPERAGE	HZ	STARTING METHOD	INS. CLASS		
-	-	-	-	-	-	-	-		

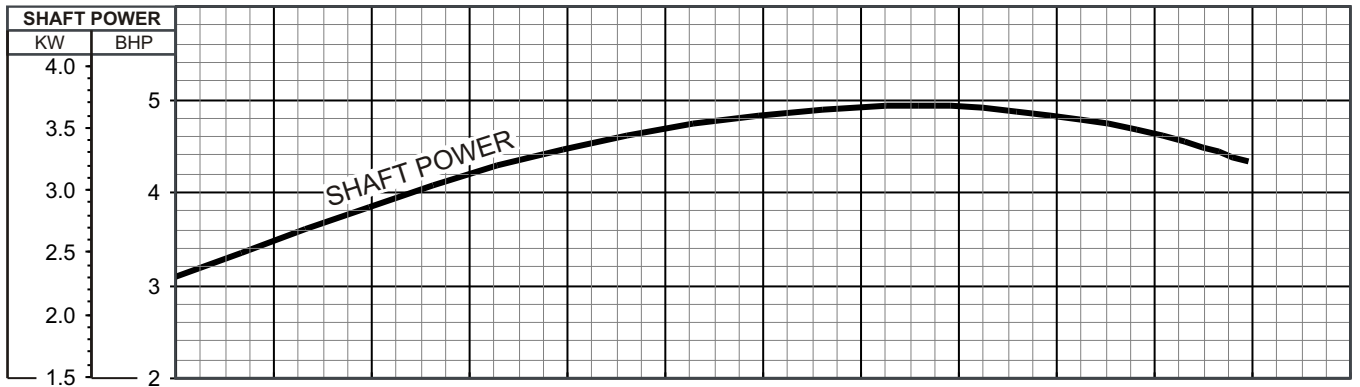
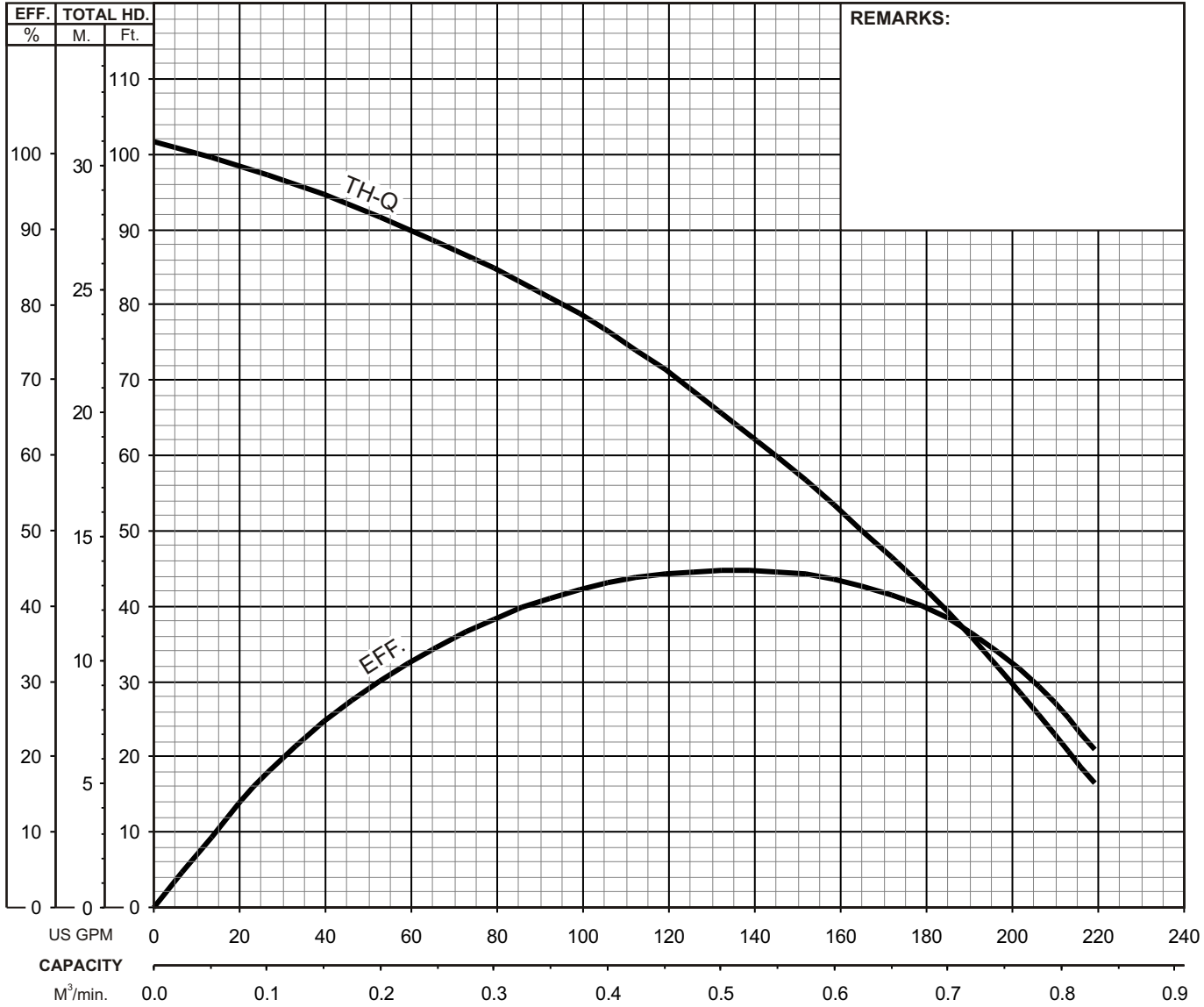




KTZ - SERIES PERFORMANCE CURVE

KTZ33.7-60

MODEL	BORE	HP	KW	RPM	SOLIDS DIA	LIQUID	SG.	VISCOSITY	TEMP.
KTZ33.7-60	3"/80mm	5	3.7	3410	0.334"/8.5mm	Water	1.0	1.81 CST	60°F
PUMP TYPE	PHASE	VOLTAGE	AMPERAGE		HZ	STARTING METHOD	INS. CLASS		
Dewatering Pump	3	208/230/460/575	14.5 / 13.0 / 6.5 / 5.3		60	Direct On Line	E		
CURVE No.	DATE	PHASE	VOLTAGE	AMPERAGE	HZ	STARTING METHOD	INS. CLASS		
-	-	-	-	-	-	-	-		

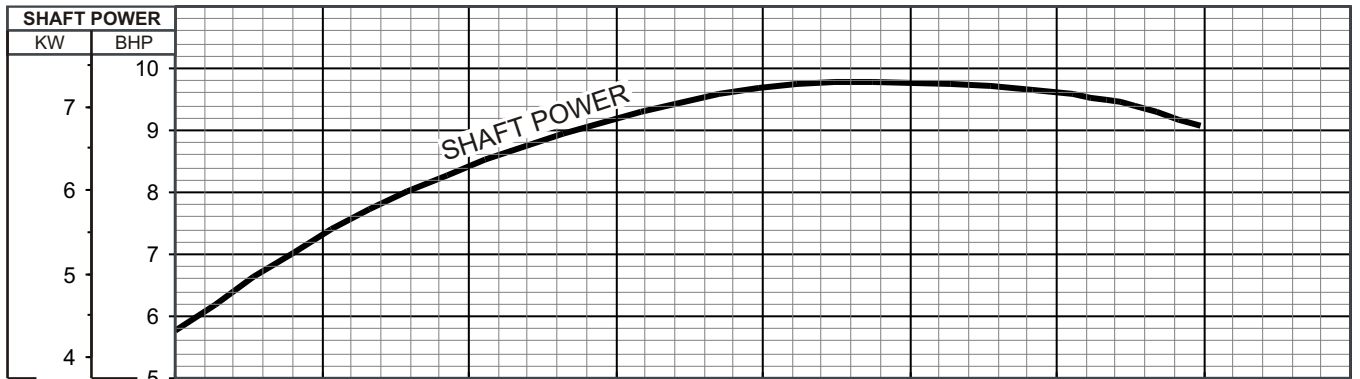
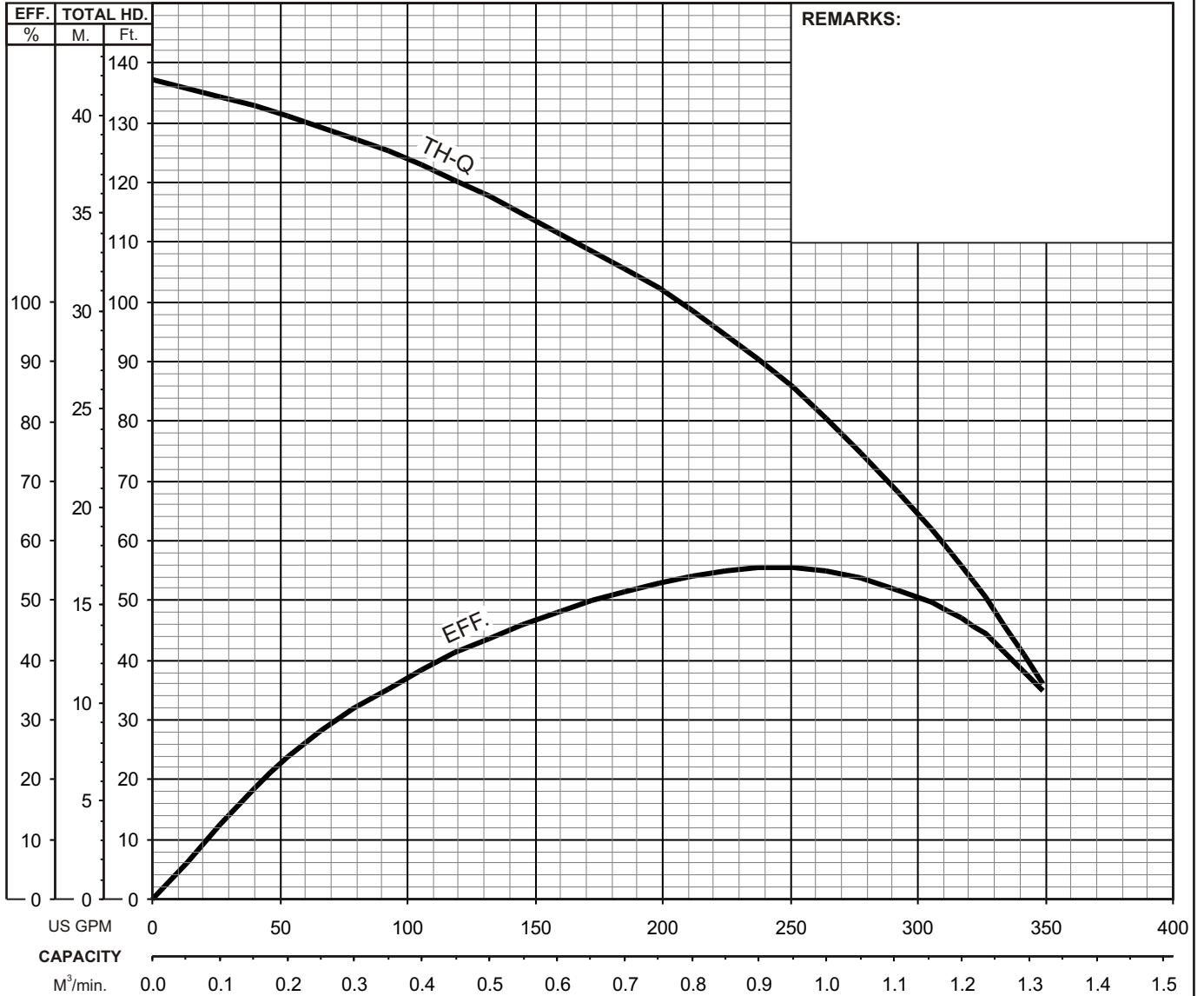




KTZ - SERIES PERFORMANCE CURVE

KTZ47.5-60

MODEL	BORE	HP	KW	RPM	SOLIDS DIA	LIQUID	SG.	VISCOSITY	TEMP.
KTZ47.5-60	4"/100mm	10	7.5	3440	0.334"/8.5mm	Water	1.0	1.81 CST	60°F
PUMP TYPE	PHASE	VOLTAGE	AMPERAGE		HZ	STARTING METHOD	INS. CLASS		
Dewatering Pump	3	208/230/460/575	28.0 / 25.0 / 12.5 / 9.7		60	Direct On Line	B		
CURVE No.	DATE	PHASE	VOLTAGE	AMPERAGE	HZ	STARTING METHOD	INS. CLASS		
-	-	-	-	-	-	-	-		

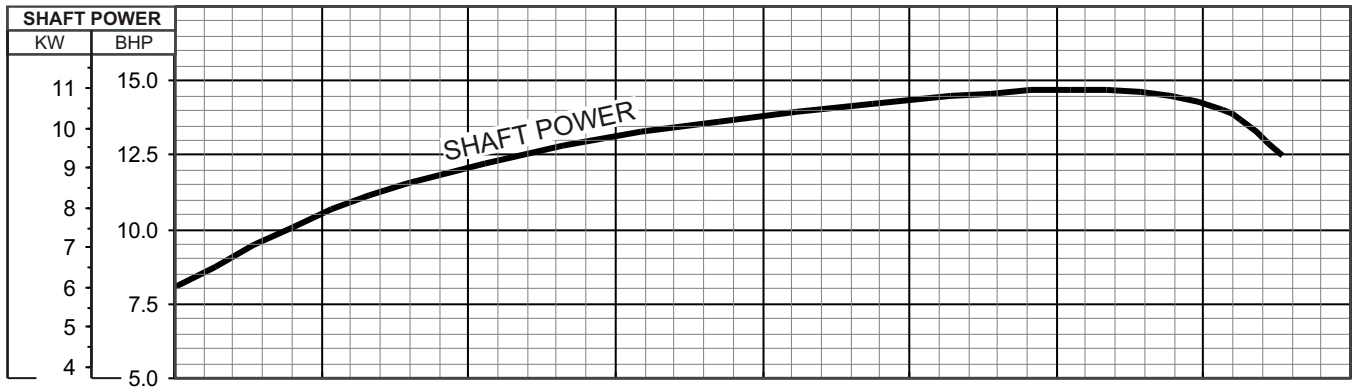
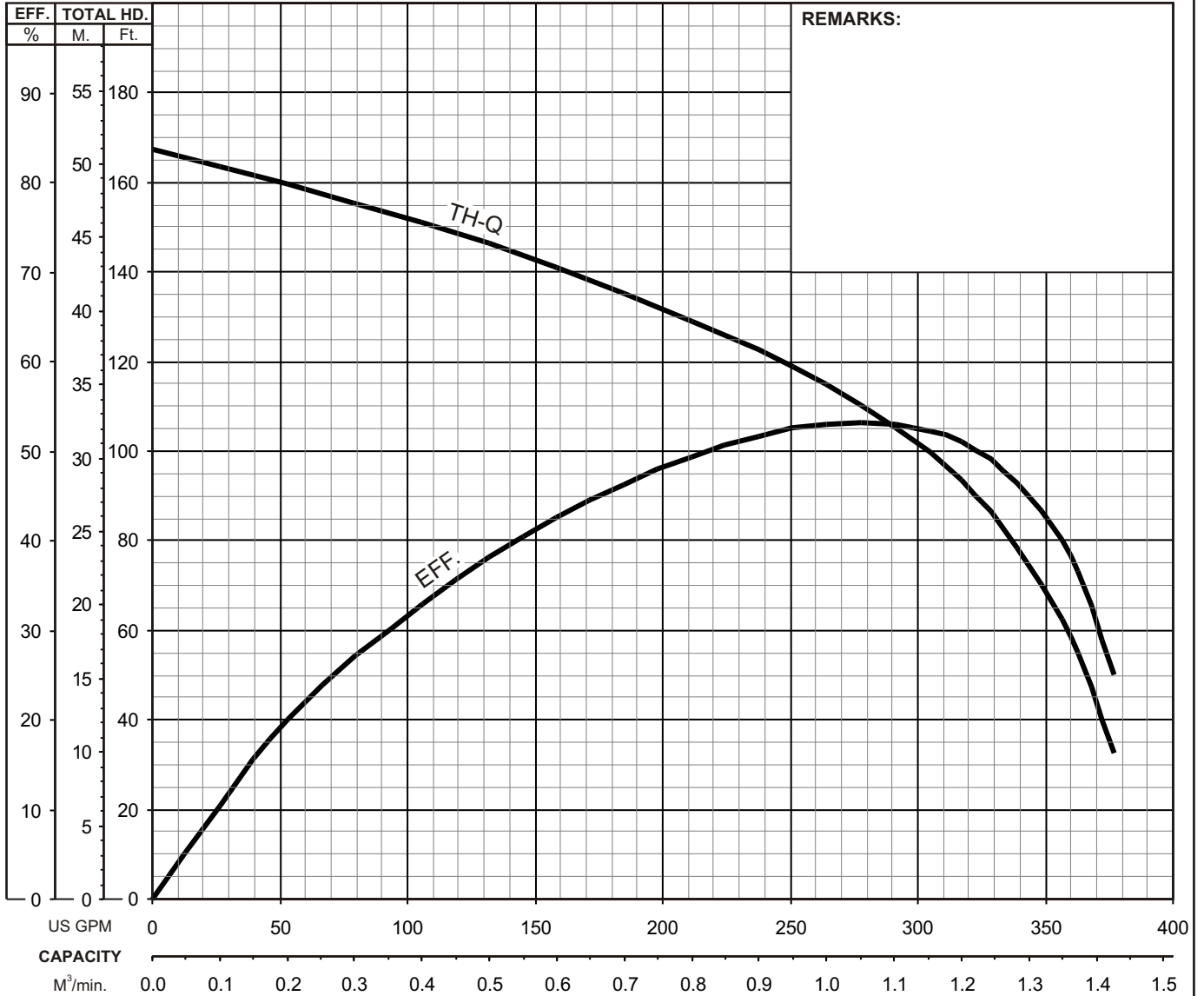




KTZ - SERIES PERFORMANCE CURVE

KTZ411-60

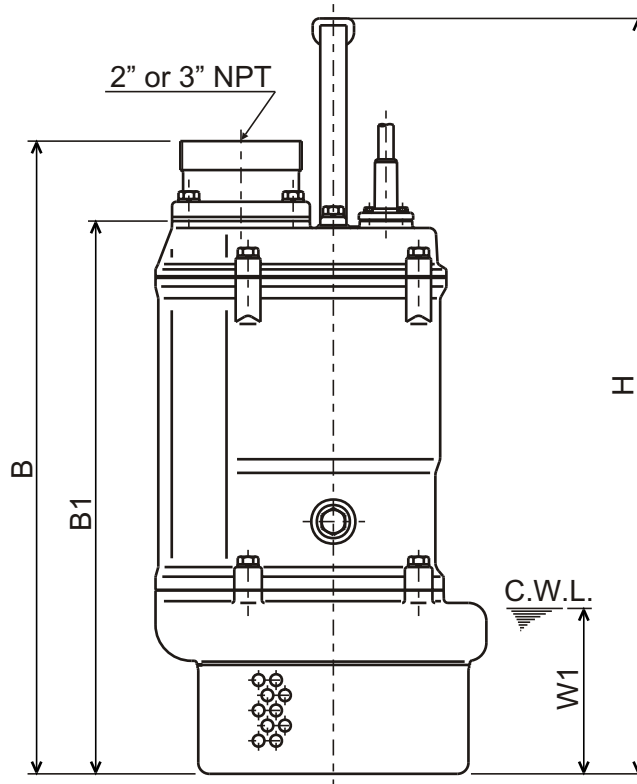
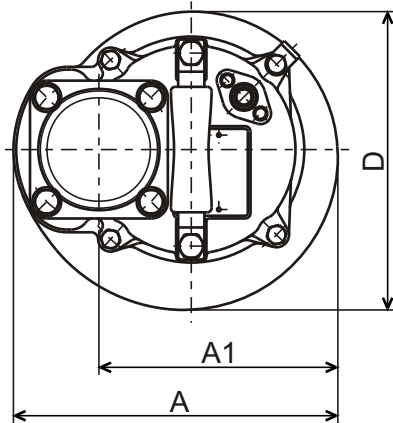
MODEL	BORE	HP	KW	RPM	SOLIDS DIA	LIQUID	SG.	VISCOSITY	TEMP.
KTZ411-60	4"/100mm	15	11	3480	0.334"/8.5mm	Water	1.0	1.81 CST	60°F
PUMP TYPE	PHASE	VOLTAGE	AMPERAGE	HZ	STARTING METHOD	INS. CLASS			
Dewatering Pump	3	208/230/460/575	41.0/36.0/18.0/14.3	60	Direct On Line	B			
CURVE No.	DATE	PHASE	VOLTAGE	AMPERAGE	HZ	STARTING METHOD	INS. CLASS		
-	-	-	-	-	-	-	-		





**KTZ-SERIES
DIMENSIONS**

**KTZ22.2-60
KTZ32.2-60**



C.W.L. : Continuous running Water Level

DIMENSIONS:USCS (Inch)

Model	HP	NOM. SIZE	Pump & Motor						C.W.L.	Wt. (lbs.)
			A	A1	B	B1	D	H	W1	
KTZ22.2-60	3	2"	9 1/4	6 13/16	19 1/16	16 9/16	8 1/2	22 3/8	4 3/4	70
KTZ32.2-60	3	3"	9 1/4	6 13/16	19 7/16	16 9/16	8 1/2	22 3/8	4 3/4	70

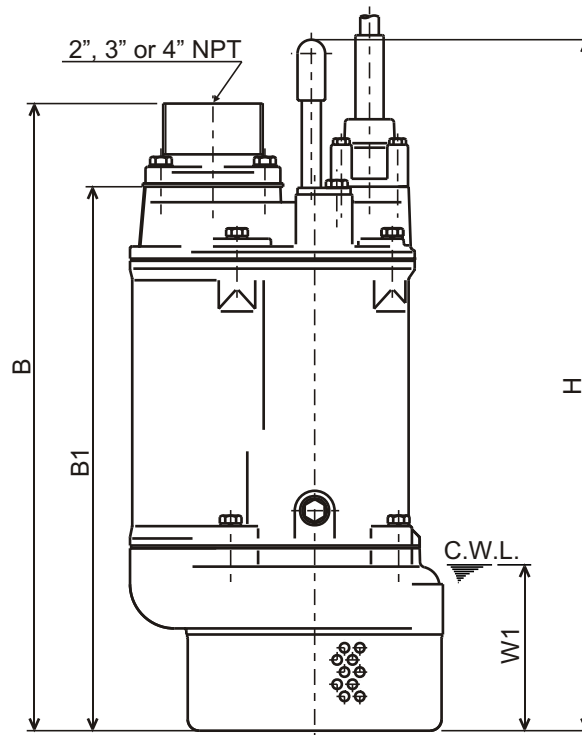
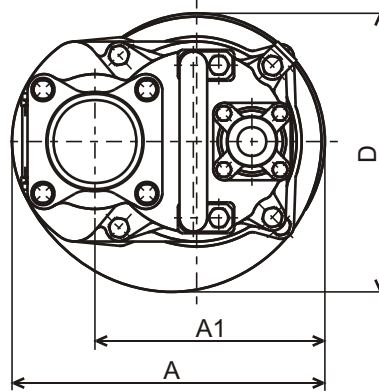
DIMENSIONS:METRIC (mm)

Model	kW	NOM. SIZE	Pump & Motor						C.W.L.	Wt. (kg)
			A	A1	B	B1	D	H	W1	
KTZ22.2-60	2.2	50	235	173	484	421	216	568	120	32
KTZ32.2-60	2.2	80	235	173	494	421	216	568	120	32



**KTZ-SERIES
DIMENSIONS**

**KTZ23.7-60, KTZ33.7-60
KTZ43.7-60**



C.W.L. : Continuous running Water Level

DIMENSIONS:USCS (Inch)

Model	HP	NOM. SIZE	Pump & Motor						C.W.L.	Wt. (lbs.)
			A	A1	B	B1	D	H	W1	
KTZ23.7-60	5	2"	11 1/8	8 3/16	21 7/8	19 3/8	9 15/16	24 5/8	5 7/8	121
KTZ33.7-60	5	3"	11 1/8	8 3/16	21 7/8	19 3/8	9 15/16	24 5/8	5 7/8	121
KTZ43.7-60	5	4"	11 1/8	8 3/16	22 13/16	19 3/8	9 15/16	24 5/8	5 7/8	121

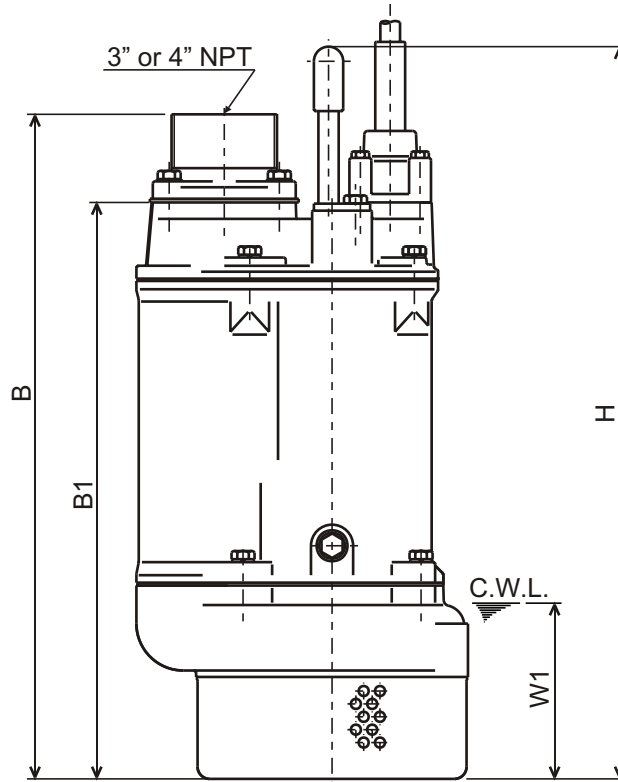
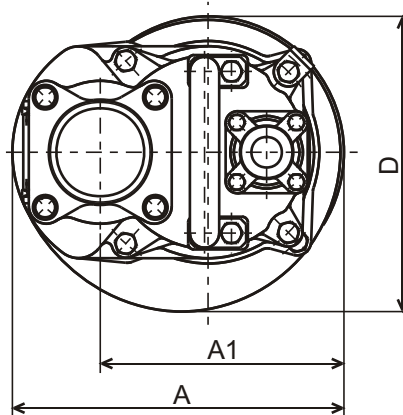
DIMENSIONS:METRIC (mm)

Model	kW	NOM. SIZE	Pump & Motor						C.W.L.	Wt. (kg)
			A	A1	B	B1	D	H	W1	
KTZ23.7-60	3.7	50	283	208	555	492	252	625	150	55
KTZ33.7-60	3.7	80	283	208	555	492	252	625	150	55
KTZ43.7-60	3.7	100	283	208	580	492	252	625	150	55



**KTZ-SERIES
DIMENSIONS**

**KTZ35.5-60
KTZ45.5-60**



C.W.L. : Continuous running Water Level

DIMENSIONS:USCS (Inch)

Model	HP	NOM. SIZE	Pump & Motor							C.W.L. W1	Wt. (lbs.)
			A	A1	B	B1	D	H			
KTZ35.5-60	7.5	3"	12 1/16	8 9/16	22 15/16	20 1/2	10 3/16	25 11/16	5 7/8	145	
KTZ45.5-60	7.5	4"	12 1/16	8 9/16	23 15/16	20 1/2	10 3/16	25 11/16	5 7/8	145	

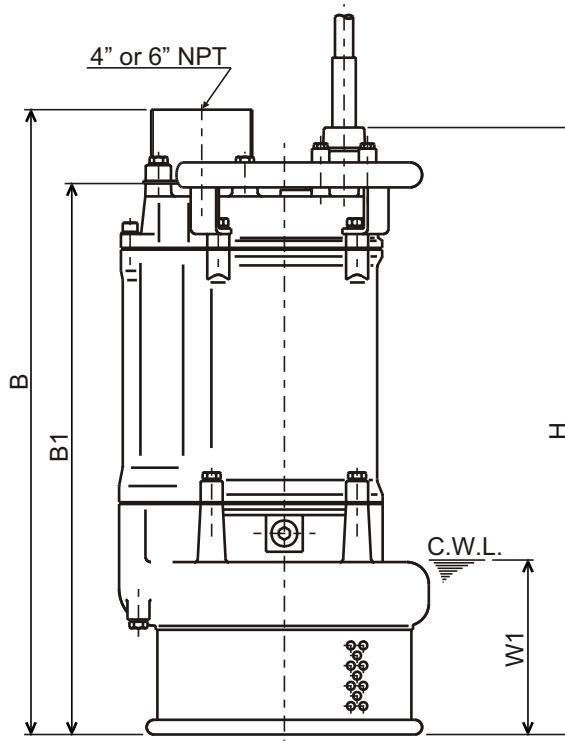
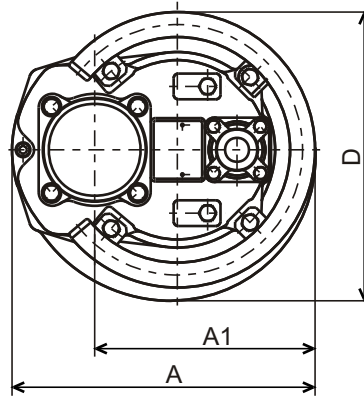
DIMENSIONS:METRIC (mm)

Model	kW	NOM. SIZE	Pump & Motor							C.W.L. W1	Wt. (kg)
			A	A1	B	B1	D	H			
KTZ35.5-60	5.5	80	306	218	583	520	259	653	150	66	
KTZ45.5-60	5.5	100	306	218	608	520	259	653	150	66	



**KTZ-SERIES
DIMENSIONS**

**KTZ47.5-60
KTZ67.5-60**



C.W.L. : Continuous running Water Level

DIMENSIONS:USCS (Inch)

Model	HP	NOM. SIZE	Pump & Motor						C.W.L.	Wt. (lbs.)
			A	A1	B	B1	D	H	W1	
KTZ47.5-60	10	4"	13	9 7/16	27 1/16	23 5/8	12 3/8	26	7 1/2	205
KTZ67.5-60(4")	10	4"	13	9 7/16	27 1/16	23 5/8	12 3/8	26	7 1/2	205
KTZ67.5-60	10	6"	13	9 7/16	29 5/8	23 5/8	12 3/8	26	7 1/2	205

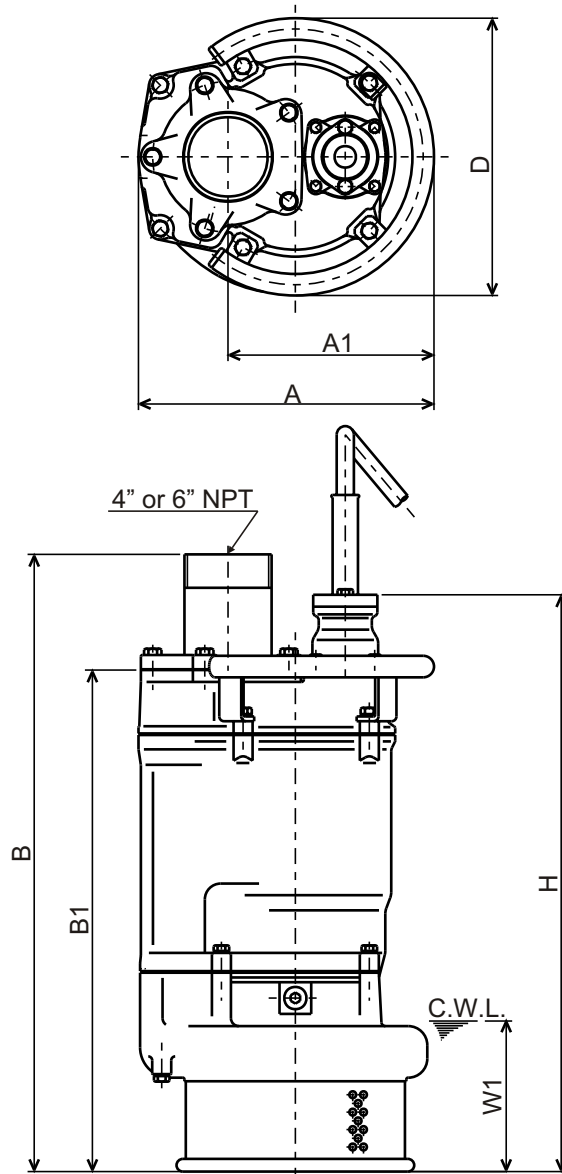
DIMENSIONS:METRIC (mm)

Model	kW	NOM. SIZE	Pump & Motor						C.W.L.	Wt. (kg)
			A	A1	B	B1	D	H	W1	
KTZ47.5-60	7.5	100	330	240	688	600	314	661	190	93
KTZ67.5-60(4")	7.5	100	330	240	688	600	314	661	190	93
KTZ67.5-60	7.5	150	330	240	753	600	314	661	190	93



**KTZ-SERIES
DIMENSIONS**

**KTZ411-60
KTZ611-60**



C.W.L. : Continuous running Water Level

DIMENSIONS:USCS (Inch)

Model	HP	NOM. SIZE	Pump & Motor						C.W.L.	Wt. (lbs.)
			A	A1	B	B1	D	H	W1	
KTZ411-60	15	4"	14 11/16	10 1/4	31 1/4	24 15/16	13 3/4	28 11/16	7 1/2	286
KTZ611-60(4")	15	4"	14 11/16	10 1/4	31 1/4	24 15/16	13 3/4	28 11/16	7 1/2	286
KTZ611-60	15	6"	14 11/16	10 1/4	29 11/16	24 15/16	13 3/4	28 11/16	7 1/2	286

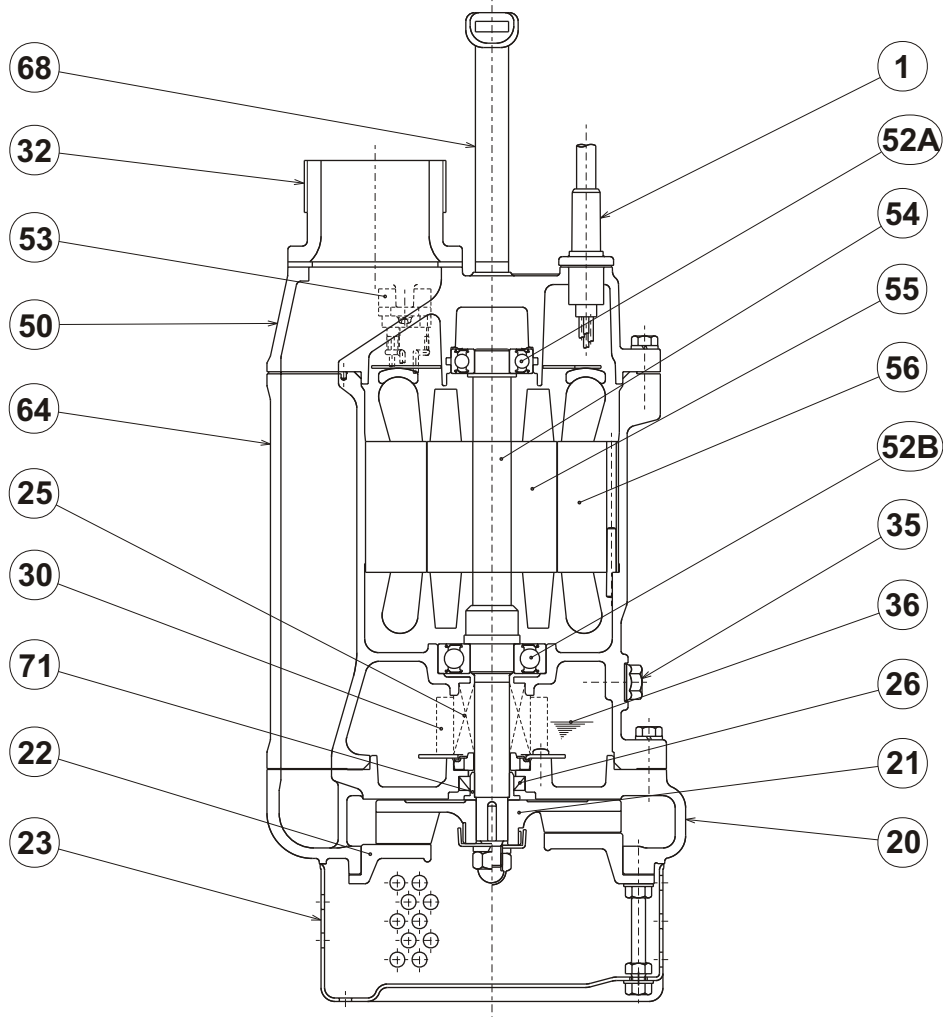
DIMENSIONS:METRIC (mm)

Model	kW	NOM. SIZE	Pump & Motor						C.W.L.	Wt. (kg)
			A	A1	B	B1	D	H	W1	
KTZ411-60	11	100	373	260	794	633	350	728	190	130
KTZ611-60(4")	11	100	373	260	794	633	350	728	190	130
KTZ611-60	11	150	373	260	754	633	350	728	190	130

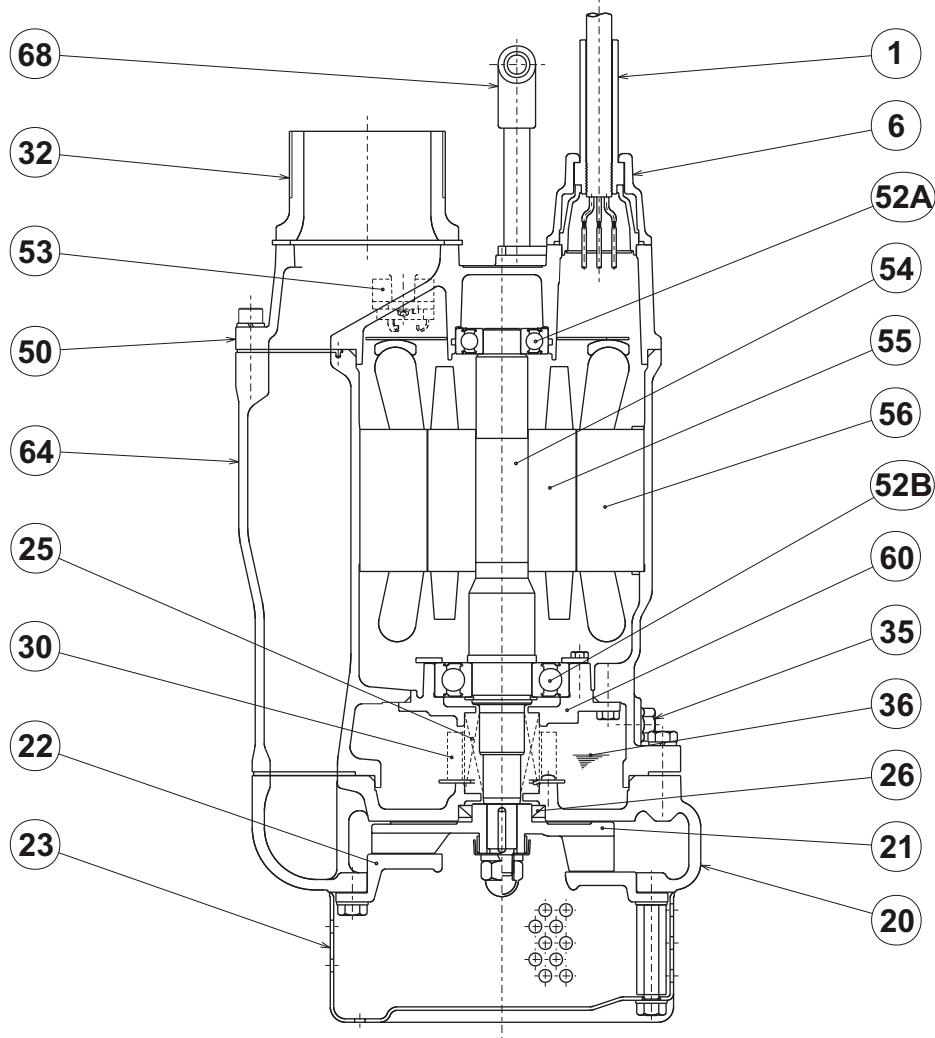


**KTZ - SERIES
SECTIONAL VIEW**

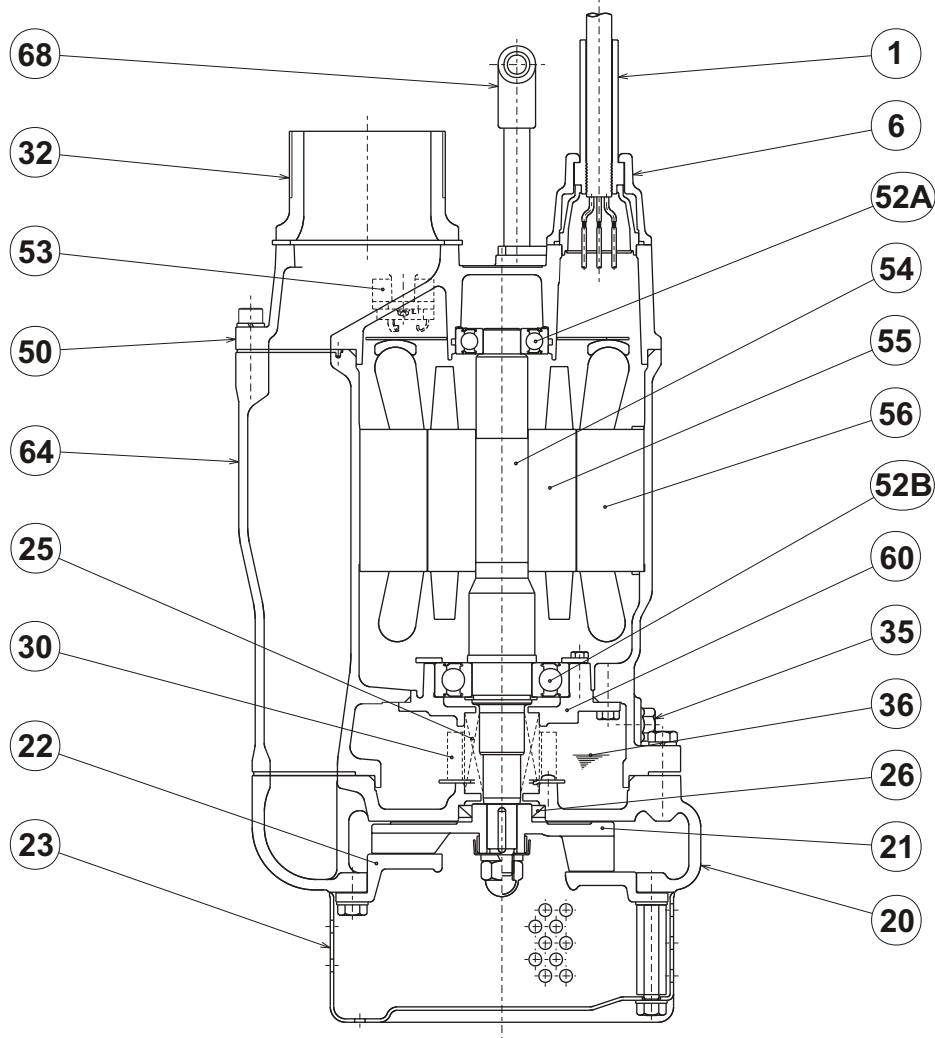
**KTZ22.2-60
KTZ32.2-60**



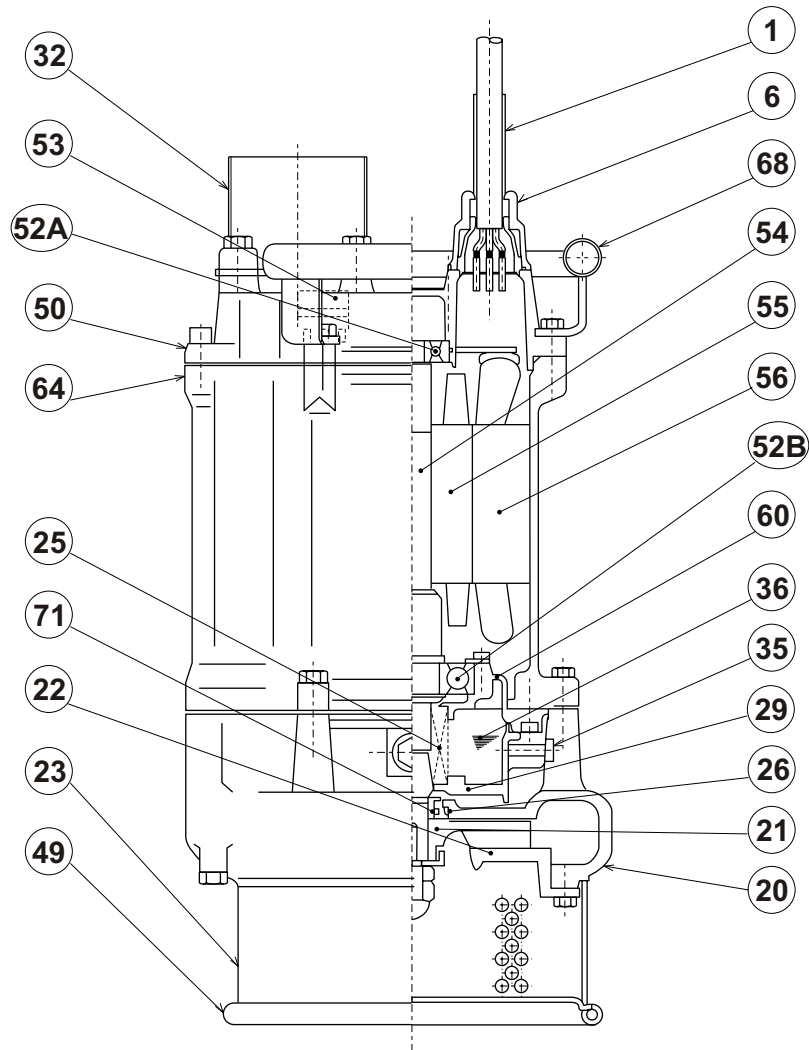
ITEM#	DESCRIPTION	MAIN MATERIAL / NOTE	ASTM, AISI CODE	RELATED DIN CODE	Q'TY
1	Power Cable	PVC Sheath AWG16/4-50ft			1
20	Pump Casing	Cast Iron	A48 Class 35	1691/GG20	1
21	Impeller	High Chrome Cast Iron	A532 93d Class III Type A	1695;1977	1
22	Suction Cover	Ductile Cast Iron	A536 Grade 80-55-06	1693/GGG50	1
23	Suction Strainer	Carbon Steel	A109 Class 91	1624-87 St 2,3,4	1
25	Mechanical Seal	Silicon Carbide / H-20T			1
26	Oil Seal	Nitrile Butadiene Rubber / DD-25388			1
30	Oil Lifter	ABS Resin			1
32	Discharge Connection	Cast Iron / NPT 2" or 3"	A48 Class 35	1691/GG20	1
35	Oil Plug	Stainless Steel	AISI 304	17440 X5 CrNi 18-9	1
36	Lubricant	Turbine Oil ISO VG32 or SAE10W/20W			
50	Motor Head Cover	Cast Iron	A48 Class 30	1691/GG15	1
52A	Upper Bearing	#6204ZZC3			1
52B	Lower Bearing	#6305ZZC3			1
53	Motor Protector				1
54	Shaft	Stainless Steel	AISI 420	17440 X20 Cr 13	1
55	Rotor				1
56	Stator				1
64	Motor Housing	Cast Iron	A48 Class 30	1691/GG15	1
68	Handle	Carbon Steel + Nitrile Butadiene Rubber	A109 Class 91	1624-87 St 2,3,4	1
71	Shaft Sleeve	Stainless Steel	AISI 304	17440 X5 CrNi 18-9	1



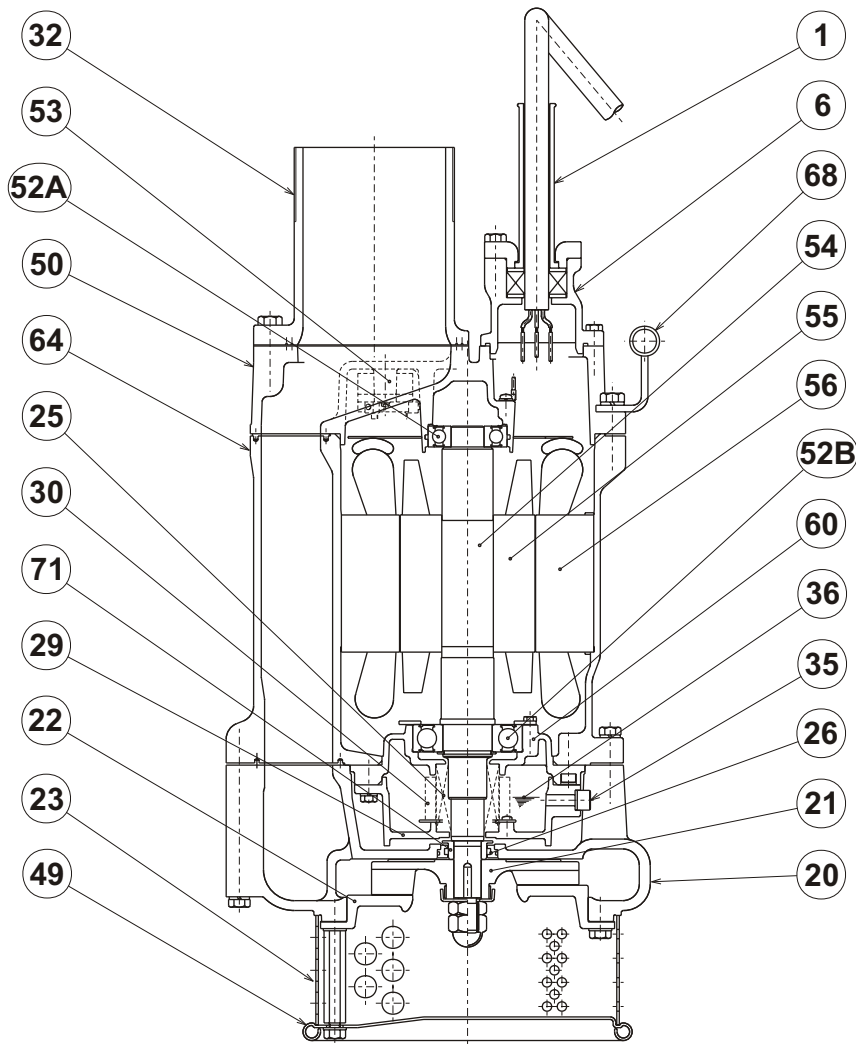
ITEM#	DESCRIPTION	MAIN MATERIAL / NOTE	ASTM, AISI CODE	RELATED DIN CODE	Q'TY
1	Power Cable	Chloroprene Sheath AWG14/4-50ft			1
6	Stuffing Box	Cast Iron	A48 Class 35	1691/GG20	1
20	Pump Casing	Cast Iron	A48 Class 35	1691/GG20	1
21	Impeller	High Chrome Cast Iron	A532 93d Class III Type A	1695;1977	1
22	Suction Cover	Ductile Cast Iron	A536 Grade 80-55-06	1693/GGG50	1
23	Suction Strainer	Carbon Steel	A109 Class 91	1624-87 St 2,3,4	1
25	Mechanical Seal	Silicon Carbide / HT-2530S			1
26	Oil Seal	Nitrile Butadiene Rubber / DD-40588			1
30	Oil Lifter	ABS Resin			1
32	Discharge Connection	Cast Iron / NPT 2", 3" or 4"	A48 Class 35	1691/GG20	1
35	Oil Plug	Stainless Steel	AISI 304	17440 X5 CrNi 18-9	1
36	Lubricant	Turbine Oil ISO VG32 or SAE10W/20W			
50	Motor Head Cover	Cast Iron	A48 Class 30	1691/GG15	1
52A	Upper Bearing	#6304ZZC3			1
52B	Lower Bearing	#6307ZZC3			1
53	Motor Protector				1
54	Shaft	Stainless Steel	AISI 420	17440 X20 Cr 13	1
55	Rotor				1
56	Stator				1
64	Motor Housing	Cast Iron	A48 Class 30	1691/GG15	1
68	Handle	Carbon Steel Pipe + NBR Rubber	A53 Type F	1615/St33	1



ITEM#	DESCRIPTION	MAIN MATERIAL / NOTE	ASTM, AISI CODE	RELATED DIN CODE	Q'TY
1	Power Cable	Chloroprene Sheath AWG12/4-50ft			1
6	Stuffing Box	Cast Iron	A48 Class 35	1691/GG20	1
20	Pump Casing	Cast Iron	A48 Class 35	1691/GG20	1
21	Impeller	High Chrome Cast Iron	A532 93d Class III Type A	1695;1977	1
22	Suction Cover	Ductile Cast Iron	A536 Grade 80-55-06	1693/GGG50	1
23	Suction Strainer	Carbon Steel	A109 Class 91	1624-87 St 2,3,4	1
25	Mechanical Seal	Silicon Carbide / HT-2530S			1
26	Oil Seal	Nitrile Butadiene Rubber / DD-40588			1
30	Oil Lifter	ABS Resin			1
32	Discharge Connection	Cast Iron / NPT 3" or 4"	A48 Class 35	1691/GG20	1
35	Oil Plug	Stainless Steel	AISI 304	17440 X5 CrNi 18-9	1
36	Lubricant	Turbine Oil ISO VG32 or SAE10W/20W			
50	Motor Head Cover	Cast Iron	A48 Class 30	1691/GG15	1
52A	Upper Bearing	#6305ZZC3			1
52B	Lower Bearing	#6308ZZC3			1
53	Motor Protector				1
54	Shaft	Stainless Steel	AISI 420	17440 X20 Cr 13	1
55	Rotor				1
56	Stator				1
64	Motor Housing	Cast Iron	A48 Class 30	1691/GG15	1
68	Handle	Carbon Steel Pipe + NBR Rubber	A53 Type F	1615/St33	1


TSURUMI PUMP
**KTZ - SERIES
SECTIONAL VIEW**
**KTZ47.5-60
KTZ67.5-60**


ITEM#	DESCRIPTION	MAIN MATERIAL / NOTE	ASTM, AISI CODE	RELATED DIN CODE	Q'TY
1	Power Cable	Chloroprene Sheath AWG10/4-50ft			1
6	Stuffing Box	Cast Iron	A48 Class 35	1691/GG20	1
20	Pump Casing	Cast Iron	A48 Class 35	1691/GG20	1
21	Impeller	High Chrome Cast Iron	A532 93d Class III Type A	1695:1977	1
22	Suction Cover	Ductile Cast Iron	A536 Grade 80-55-06	1693/GGG50	1
23	Suction Strainer	Carbon Steel	A109 Class 91	1624-87 St 2,3,4	1
25	Mechanical Seal	Silicon Carbide / HT-3035S			1
	Oil Lifter	ABS Resin			1
26	Labyrinth Ring	Stainless Steel	AISI 304	17440 X5 CrNi 18-9	1
32	Discharge Connection	Cast Iron / NPT 4" or 6"	A48 Class 35	1691/GG20	1
35	Oil Plug	Stainless Steel	AISI 304	17440 X5 CrNi 18-9	1
36	Lubricant	Turbine Oil ISO VG32 or SAE10W/20W			1
49	Bottom Plate	Carbon Steel	A109 Class 91	1624-87 St 2,3,4	1
50	Motor Head Cover	Cast Iron	A48 Class 30	1691/GG15	1
52A	Upper Bearing	#G305ZZC3			1
52B	Lower Bearing	#G309ZZC3			1
53	Motor Protector				1
54	Shaft	Stainless Steel	AISI 420	17440 X20 Cr 13	1
55	Rotor				1
56	Stator				1
60	Bearing Housing	Cast Iron	A48 Class 30	1691/GG15	1
64	Motor Housing	Cast Iron	A48 Class 30	1691/GG15	1
68	Handle	Carbon Steel Pipe + Steel	A53 Type F + A283 Grade D	1615/St33 + 17100 RSt 46-2	1
71	Shaft Sleeve	Stainless Steel	AISI 403	17440 X15 Cr 13	1



ITEM#	DESCRIPTION	MAIN MATERIAL / NOTE	ASTM, AISI CODE	RELATED DIN CODE	Q'TY
1	Power Cable	Chloroprene Sheath AWG8/4-50ft			1
6	Stuffing Box	Cast Iron	A48 Class 35	1691/GG20	1
20	Pump Casing	Cast Iron	A48 Class 35	1691/GG20	1
21	Impeller	High Chrome Cast Iron	A532 93d Class III Type A	1695:1977	1
22	Suction Cover	Ductile Cast Iron	A536 Grade 80-55-06	1693/GGG50	1
23	Suction Strainer	Carbon Steel	A109 Class 91	1624-87 St 2,3,4	1
25	Mechanical Seal	Silicon Carbide / HT-3035S			1
	Oil Lifter	ABS Resin			1
26	Labyrinth Ring	Stainless Steel	AISI 304	17440 X5 CrNi 18-9	1
32	Discharge Connection	Cast Iron / NPT 4" or 6"	A48 Class 35	1691/GG20	1
35	Oil Plug	Stainless Steel	AISI 304	17440 X5 CrNi 18-9	1
36	Lubricant	Turbine Oil ISO VG32 or SAE10W/20W			1
49	Bottom Plate	Carbon Steel	A109 Class 91	1624-87 St 2,3,4	1
50	Motor Head Cover	Cast Iron	A48 Class 30	1691/GG15	1
52A	Upper Bearing	#6306ZZC3			1
52B	Lower Bearing	#6309ZZC3			1
53	Motor Protector				1
54	Shaft	Stainless Steel	AISI 420	17440 X20 Cr 13	1
55	Rotor				1
56	Stator				1
60	Bearing Housing	Cast Iron	A48 Class 30	1691/GG15	1
64	Motor Housing	Cast Iron	A48 Class 30	1691/GG15	1
68	Handle	Carbon Steel Pipe + Steel	A53 Type F + A283 Grade D	1615/St33 + 17100 RSt 46-2	1
71	Shaft Sleeve	Stainless Steel	AISI 403	17440 X15 Cr 13	1